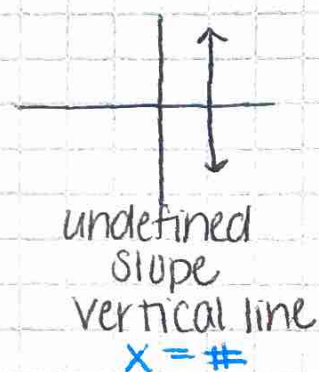
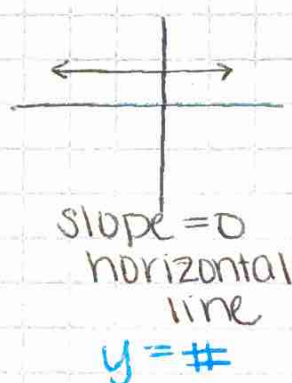
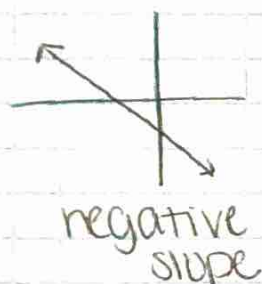
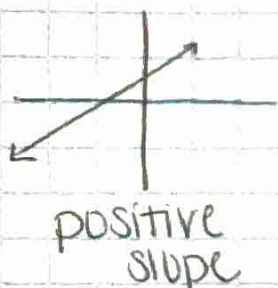


Slope-Intercept Form

$$y = mx + b$$

↑
↑
slope
y-intercept

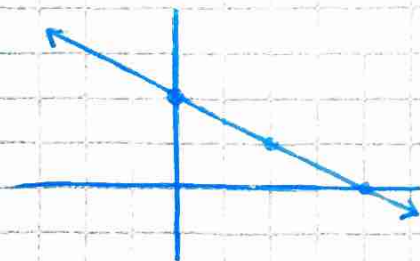
$$\frac{y_2 - y_1}{x_2 - x_1}$$



ex 1 $3x + 6y = 12$

$$6y = -3x + 12$$

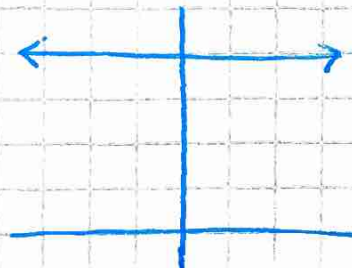
$$y = -\frac{1}{2}x + 2$$



ex 2 $4y - 16 = 0$

$$4y = 16$$

$$y = 4$$



ex3 find the eq. btwn $(0, 4)$ & $(1, -1)$

① $m = \frac{-1-4}{1-0} = \frac{-5}{1} = -5$ find slope

② $y = -5x + b$ solve for b
 $4 = -5(0) + b$
 $4 = b$

$y = -5x + 4$

ex4 $(-1, 2)$ & $(2, 2)$

$m = \frac{2-2}{2-(-1)} = \frac{0}{3} = 0$ ← slope = 0 ~ horizontal line

$y = 2$

ex5 $(3, 4)$ & $(3, 1)$

$m = \frac{1-4}{3-3} = \frac{-3}{0}$ undefined ← vertical line

$x = 3$