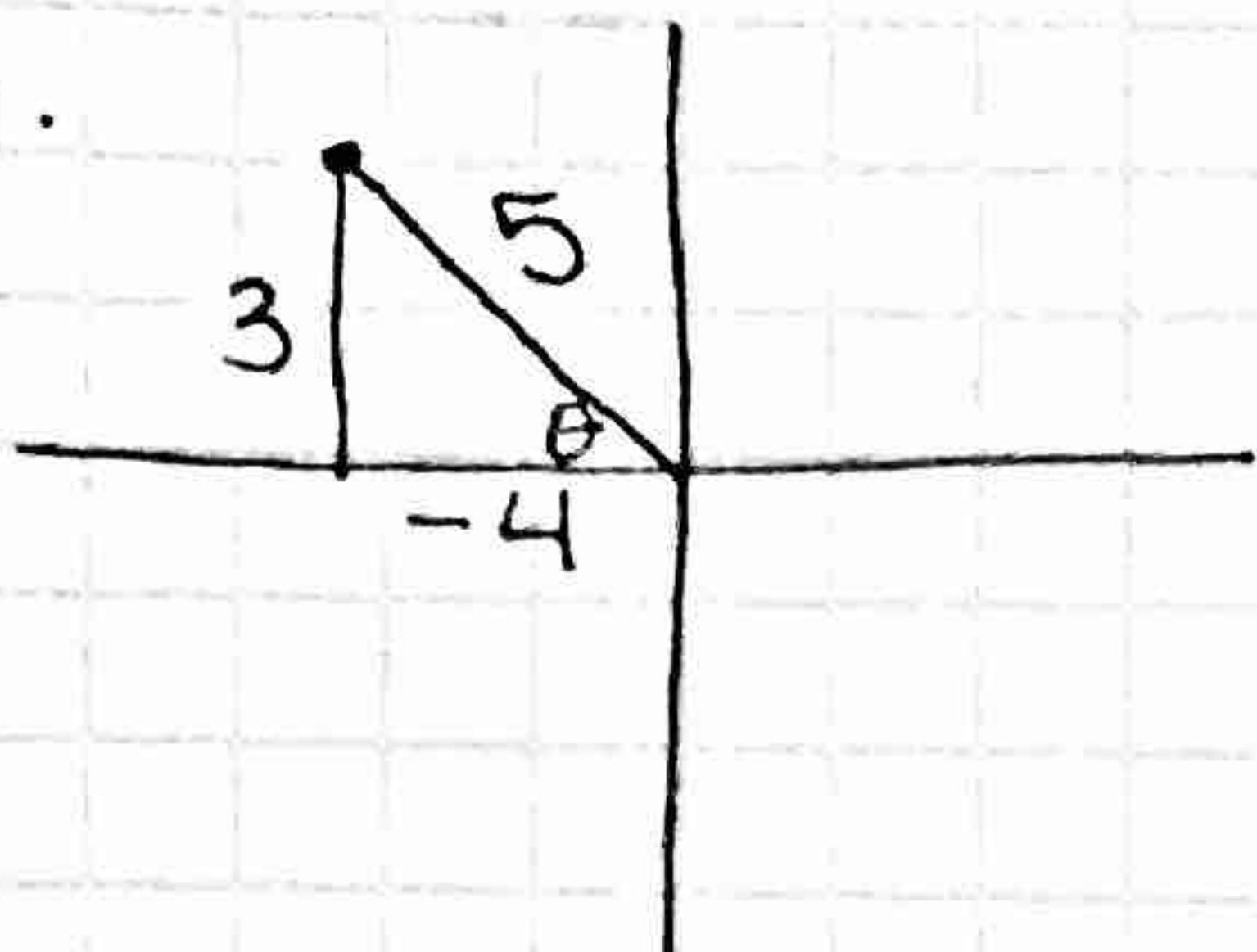


HW83

AAT

1.

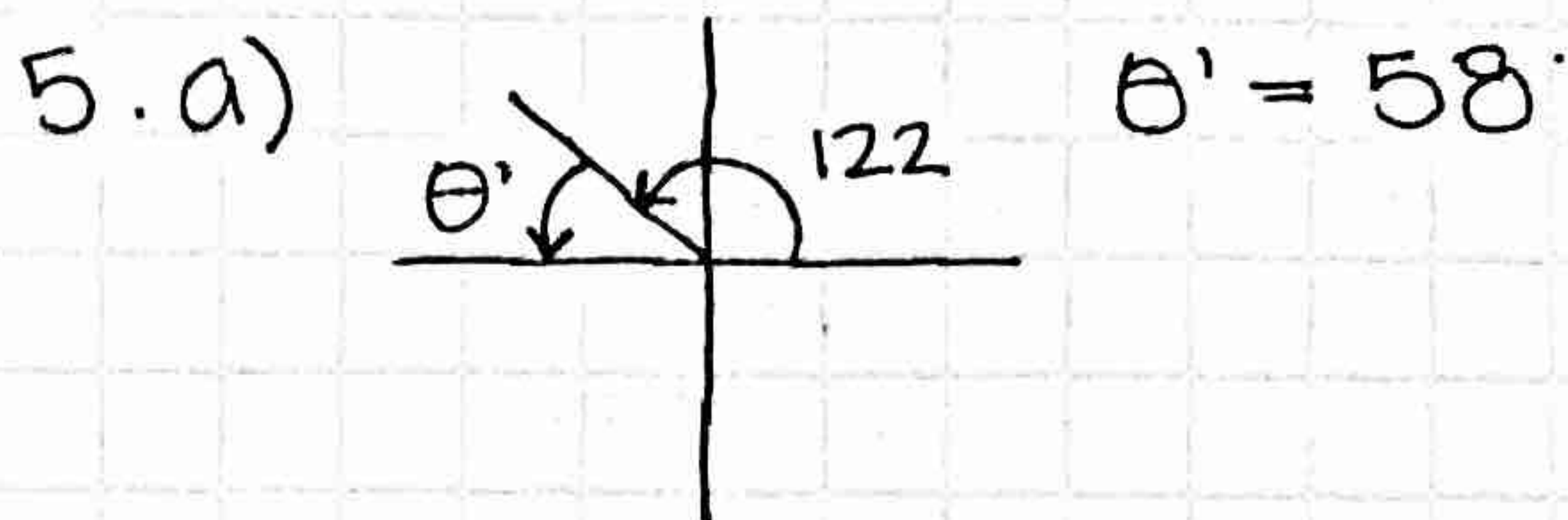


$$\begin{aligned} \sin \theta &= 3/5 & \csc \theta &= 5/3 \\ \cos \theta &= -4/5 & \sec \theta &= -5/4 \\ \tan \theta &= -3/4 & \cot \theta &= -4/3 \end{aligned}$$

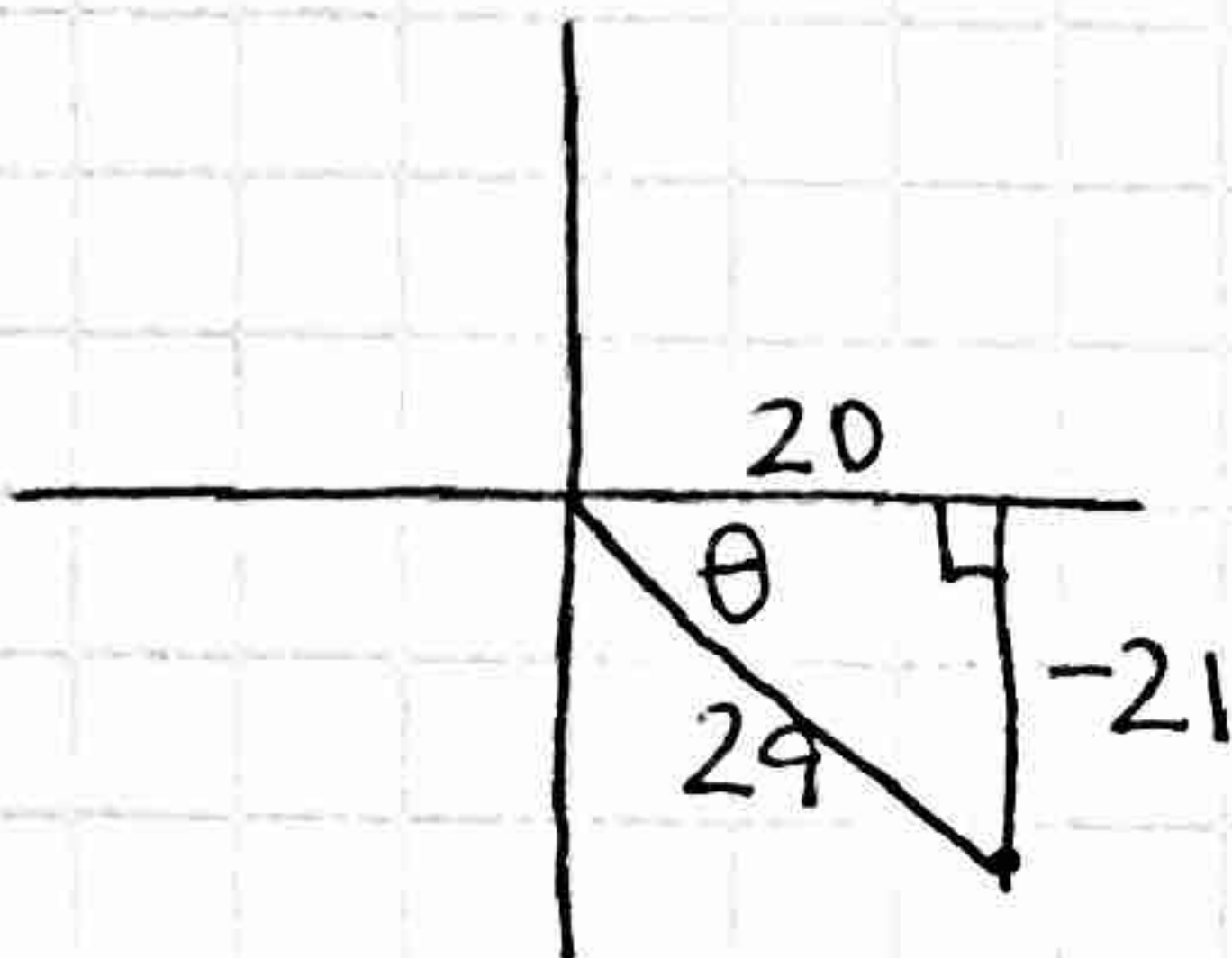
4. a) $\sin +, \cos -$
Q2

b) $\tan +, \cos -$
Q3

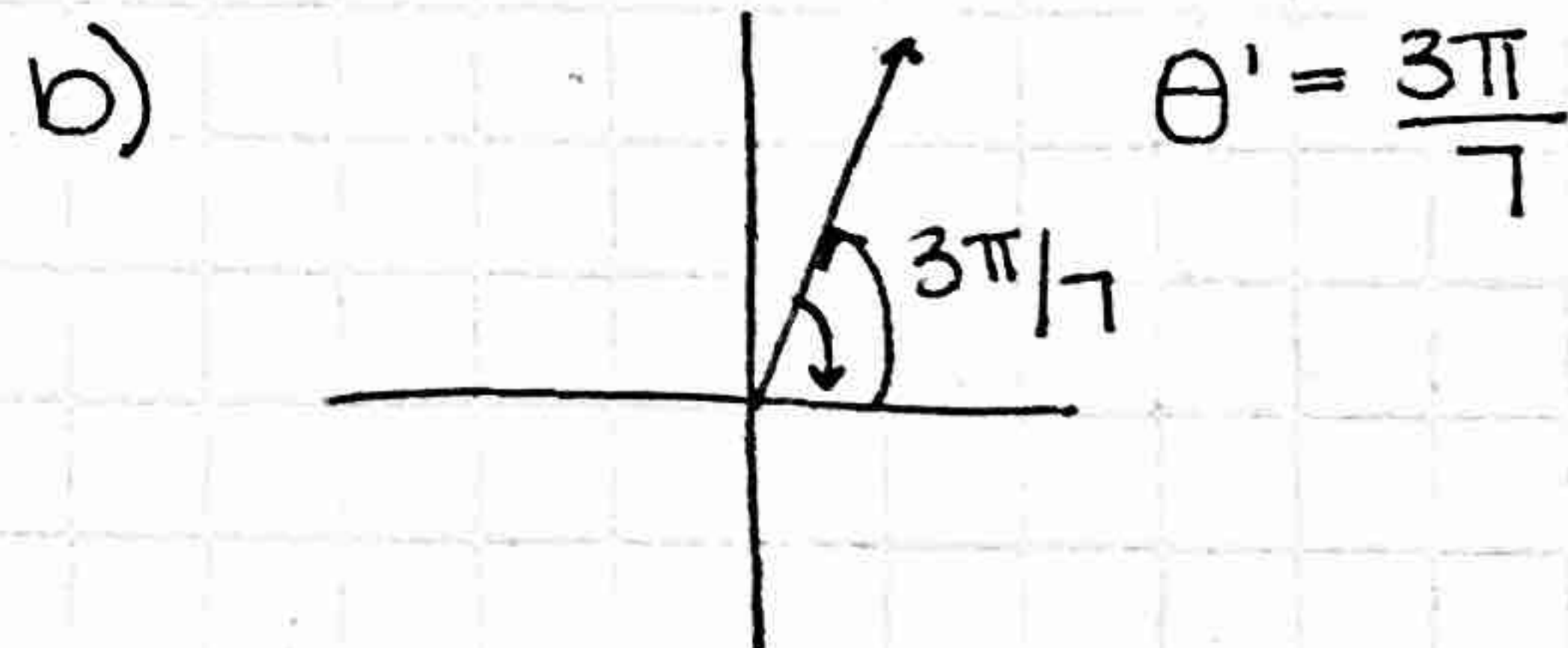
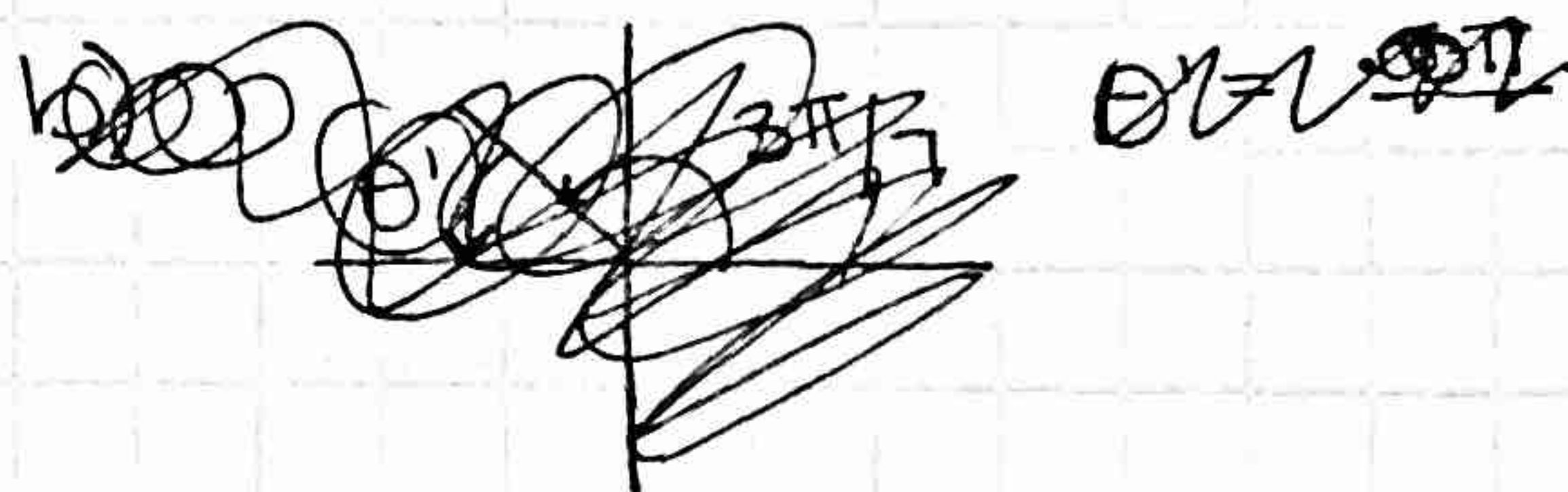
c) $\sin -, \tan +$
Q3



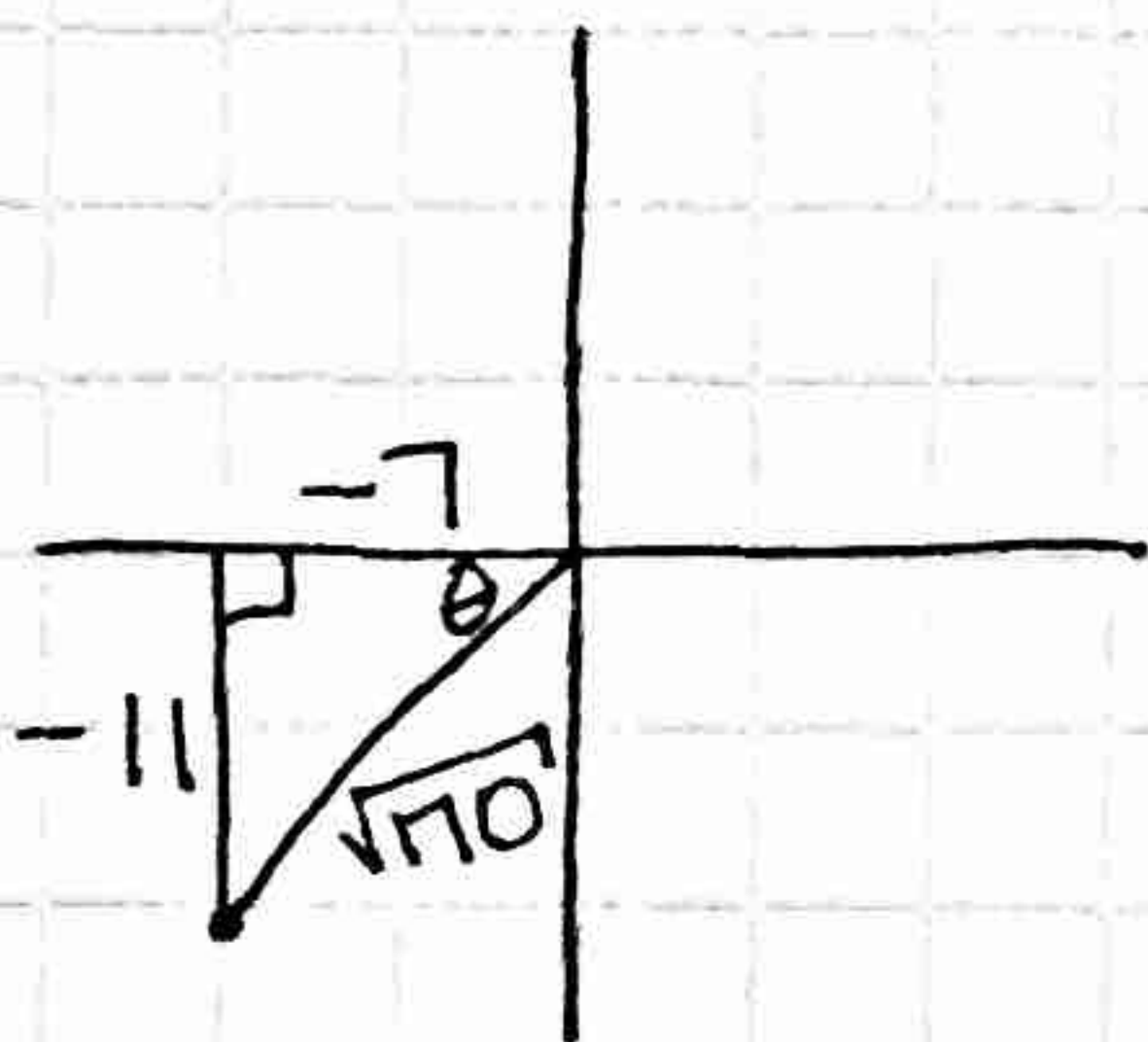
2.



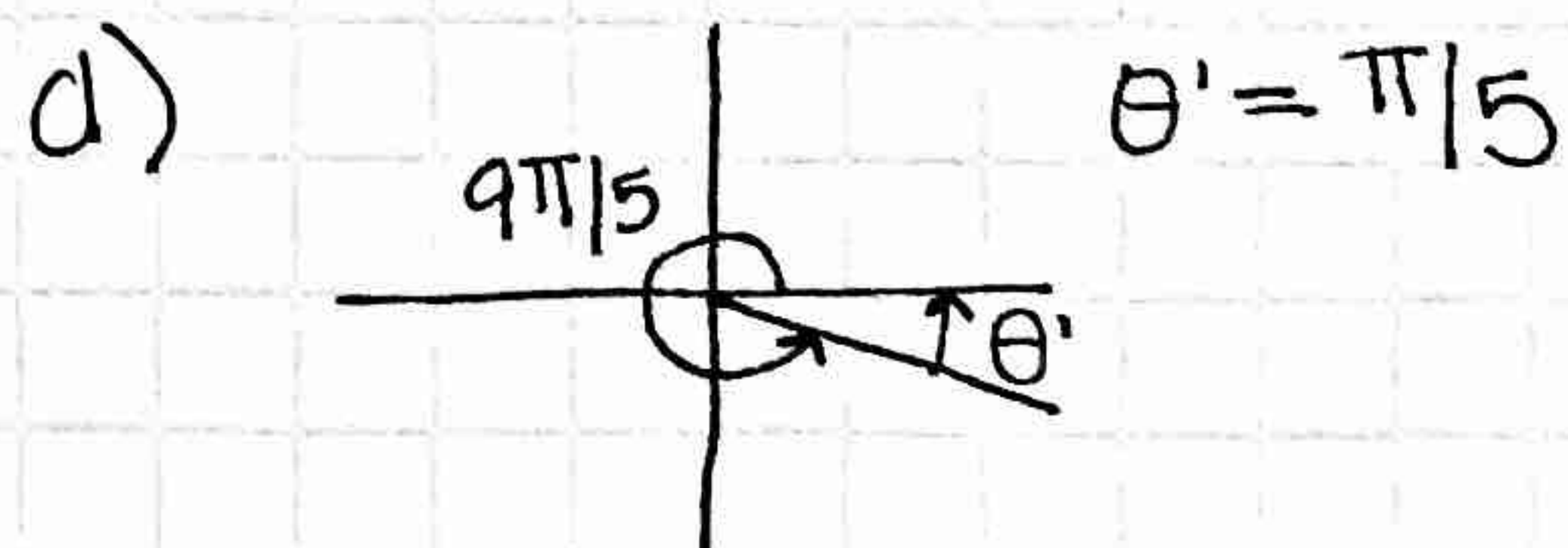
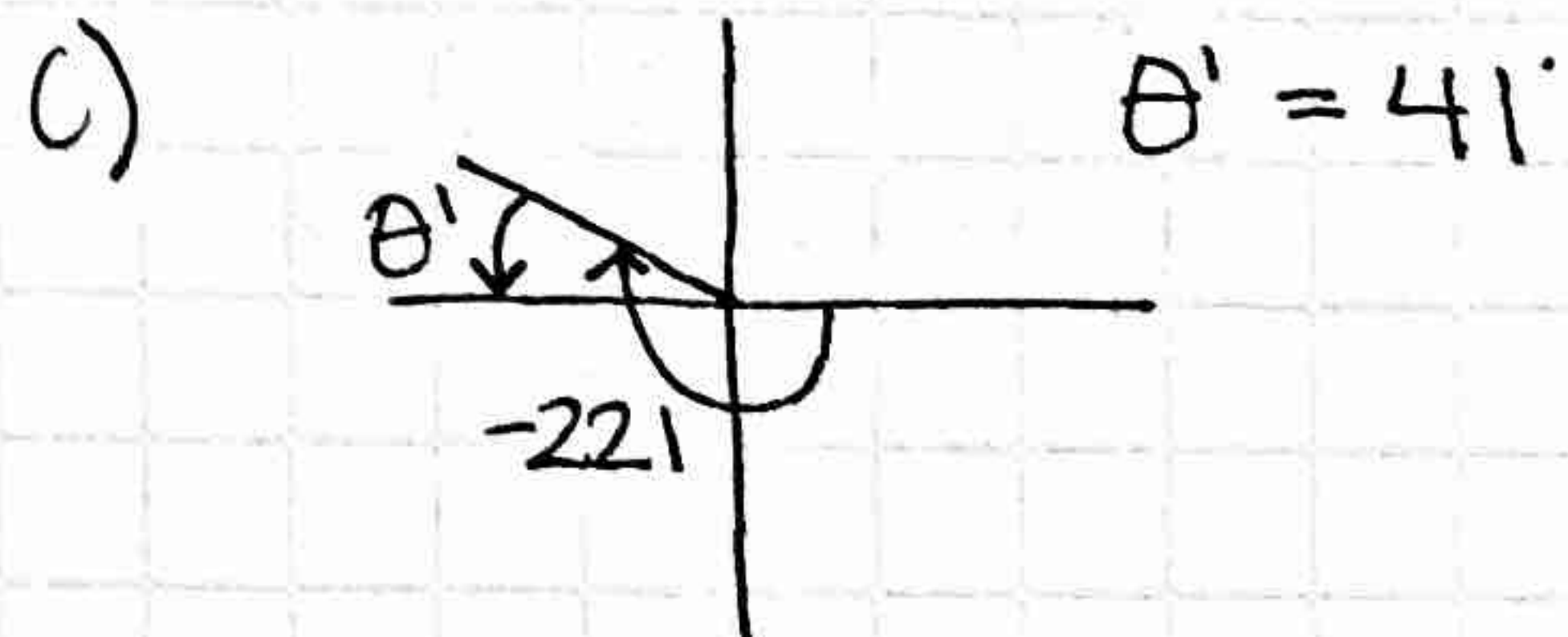
$$\begin{aligned} \sin \theta &= -21/29 & \csc \theta &= -29/21 \\ \cos \theta &= 20/29 & \sec \theta &= 29/20 \\ \tan \theta &= -21/20 & \cot \theta &= -20/21 \end{aligned}$$



3.



$$\begin{aligned} \sin \theta &= -11/\sqrt{170} & \csc \theta &= -\sqrt{170}/11 \\ \cos \theta &= -7/\sqrt{170} & \sec \theta &= \sqrt{170}/-7 \\ \tan \theta &= 11/7 & \cot \theta &= 7/11 \end{aligned}$$



6. a) $\sin \theta = \sqrt{2}/2$
 $\cos \theta = \sqrt{2}/2$
 $\tan \theta = 1$

b) $\sin \theta = -1$
 $\cos \theta = 0$
 $\tan \theta = \textcircled{0}$ undefined

c) $\sin \theta = \sqrt{3}/2$
 $\cos \theta = -1/2$
 $\tan \theta = -\sqrt{3}$

d) $\sin \theta = -1/2$
 $\cos \theta = \sqrt{3}/2$
 $\tan \theta = -\sqrt{3}/3$

e) $\sin \theta = 0$
 $\cos \theta = -1$
 $\tan \theta = 0$ ~~undefined~~

7. a) $225^\circ \text{ \& } 315^\circ$
b) $30^\circ \text{ \& } 330^\circ$
c) $0^\circ \text{ \& } 180^\circ \text{ \& } 360^\circ$
 $\cos x = -1/2$ d) $120^\circ \text{ \& } 240^\circ$

8. a) $5\pi/4 \text{ \& } 7\pi/4$
b) $\pi/6 \text{ \& } 11\pi/6$
c) $0 \text{ \& } \pi$
d) $2\pi/3 \text{ \& } 4\pi/3$