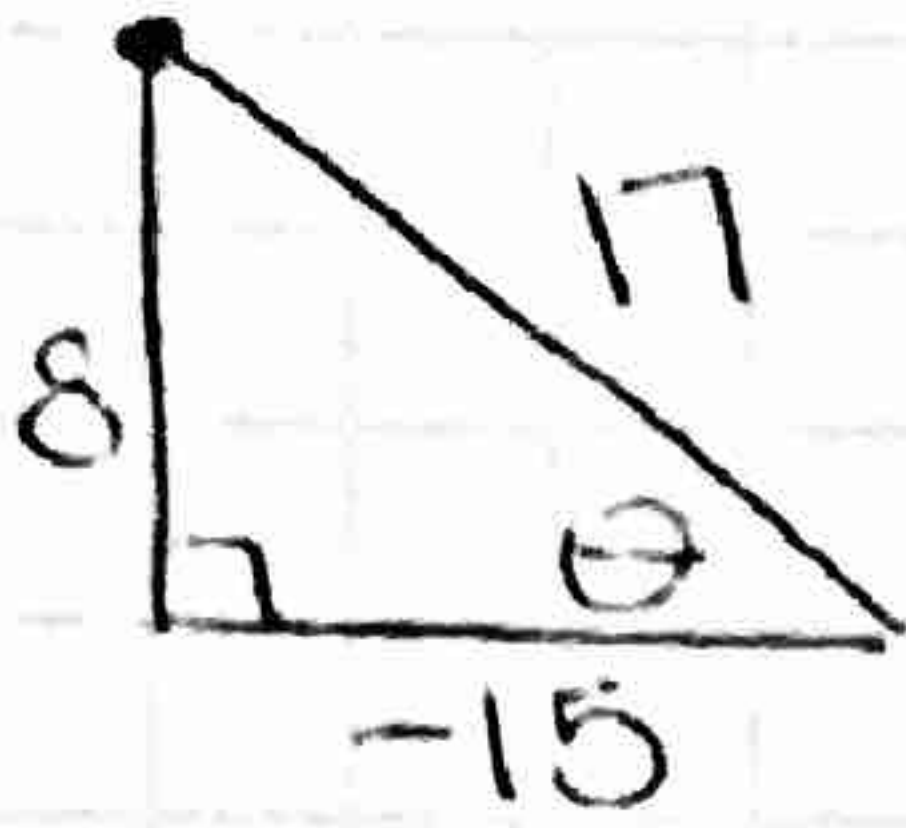


HW 81

p. 175

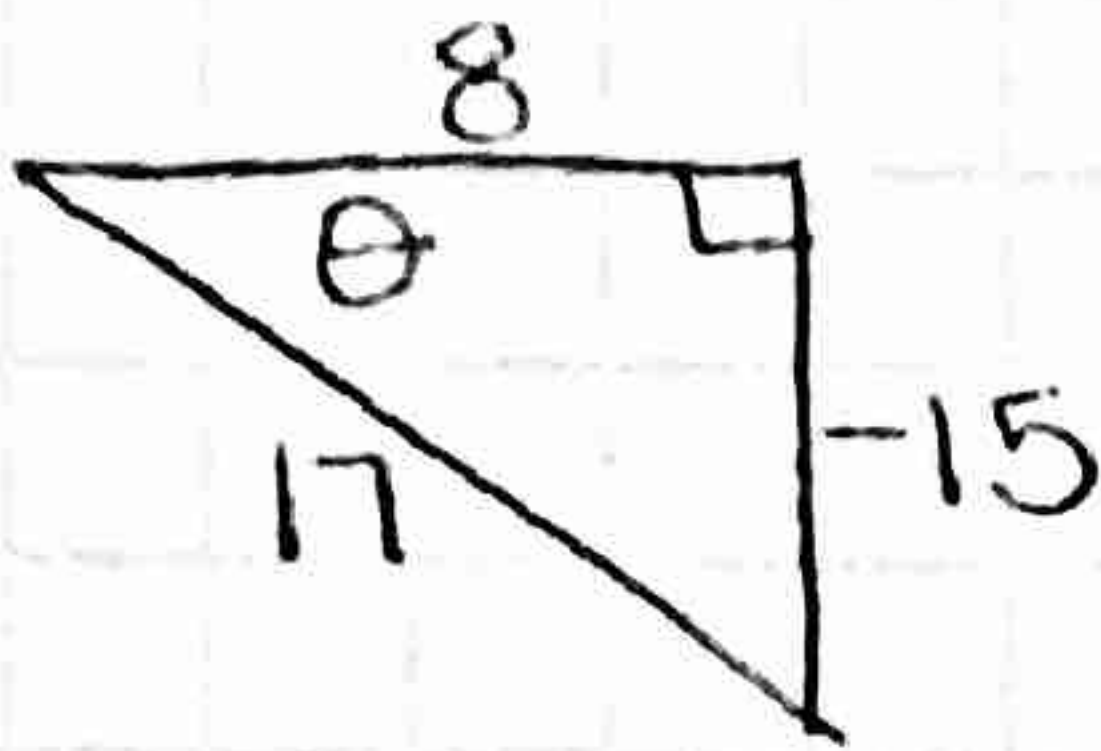
1. reference angle

19. Q2



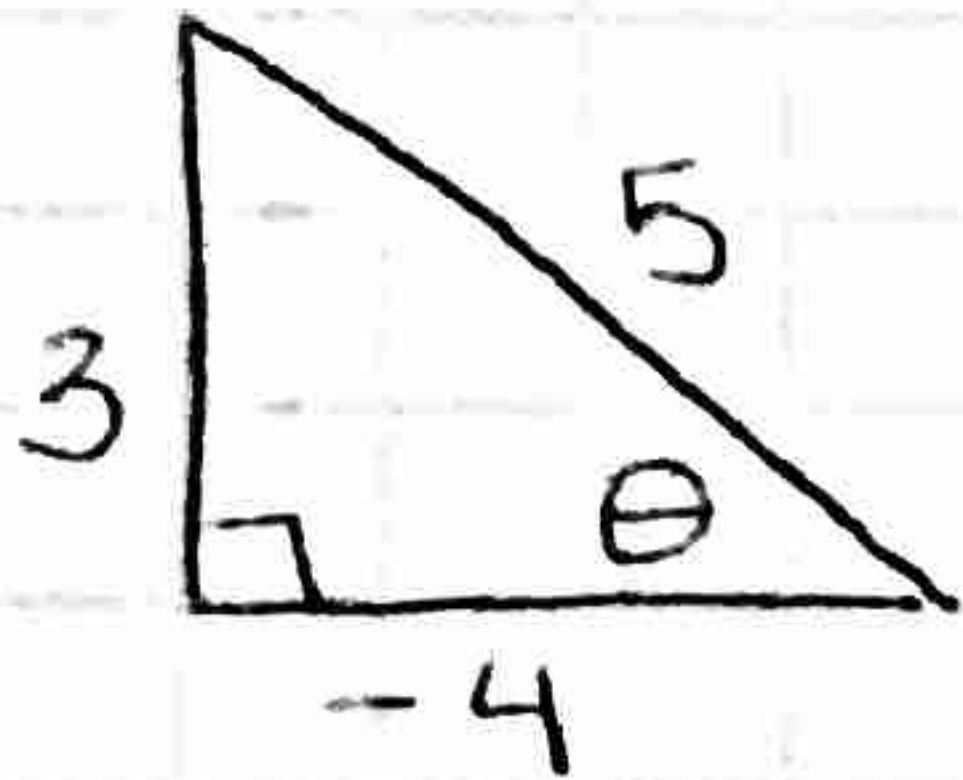
$$\begin{aligned} \sin \theta &= \frac{8}{17} & \csc \theta &= 17/8 \\ \cos \theta &= -15/17 & \sec \theta &= -17/15 \\ \tan \theta &= -8/15 & \cot \theta &= -15/8 \end{aligned}$$

20. Q4



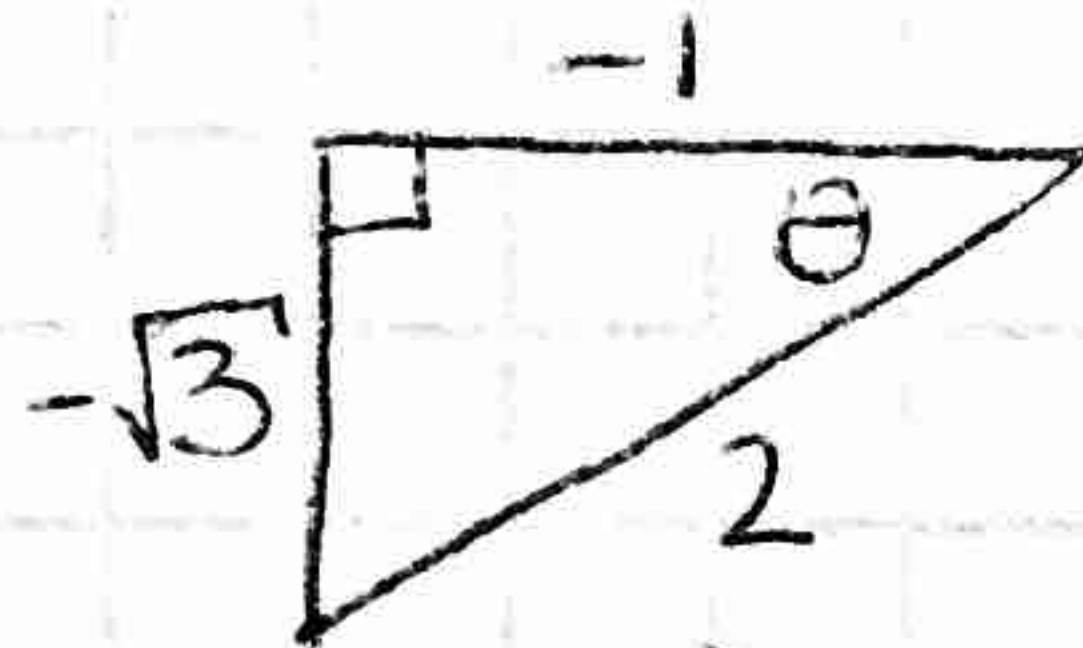
$$\begin{aligned} \sin \theta &= -15/17 & \csc \theta &= -17/15 \\ \cos \theta &= 8/17 & \sec \theta &= 17/8 \\ \tan \theta &= -15/8 & \cot \theta &= -8/15 \end{aligned}$$

21.



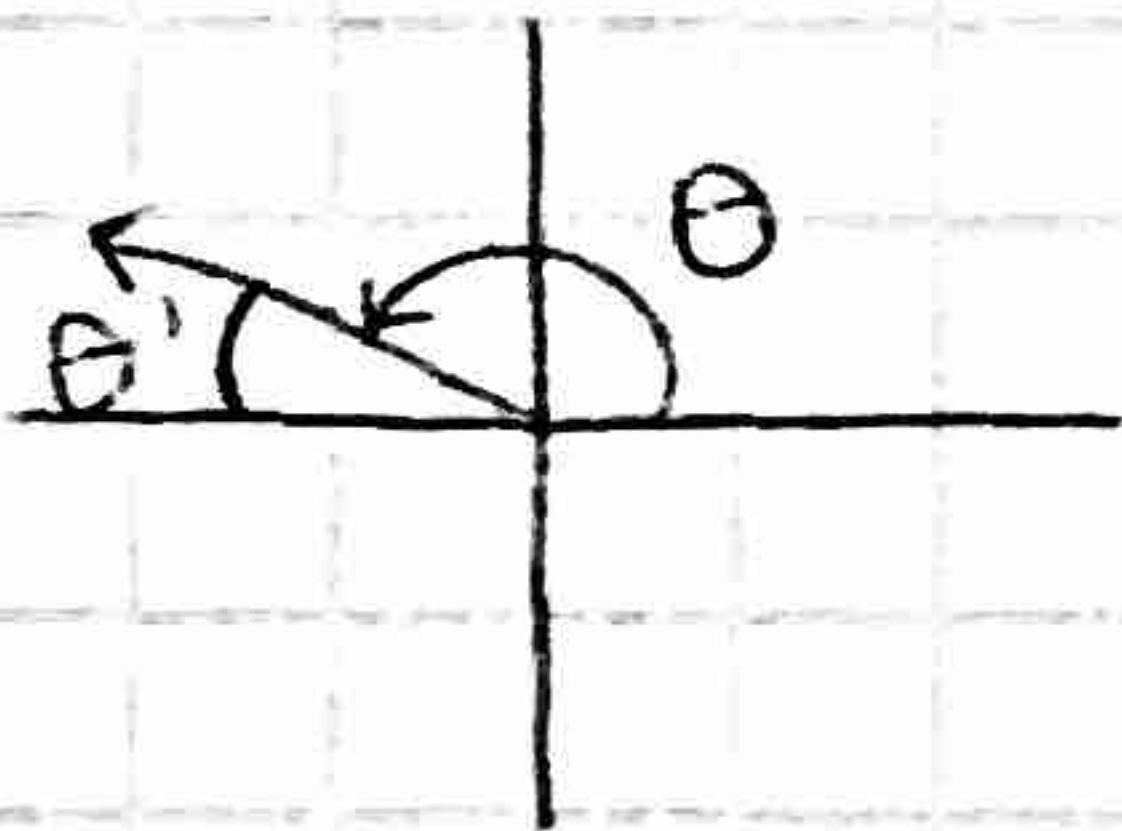
$$\begin{aligned} \sin \theta &= 3/5 & \csc \theta &= 5/3 \\ \cos \theta &= -4/5 & \sec \theta &= -5/4 \\ \tan \theta &= 3/-4 & \cot \theta &= -4/3 \end{aligned}$$

25. $\cos \theta = -1/2$
Q3

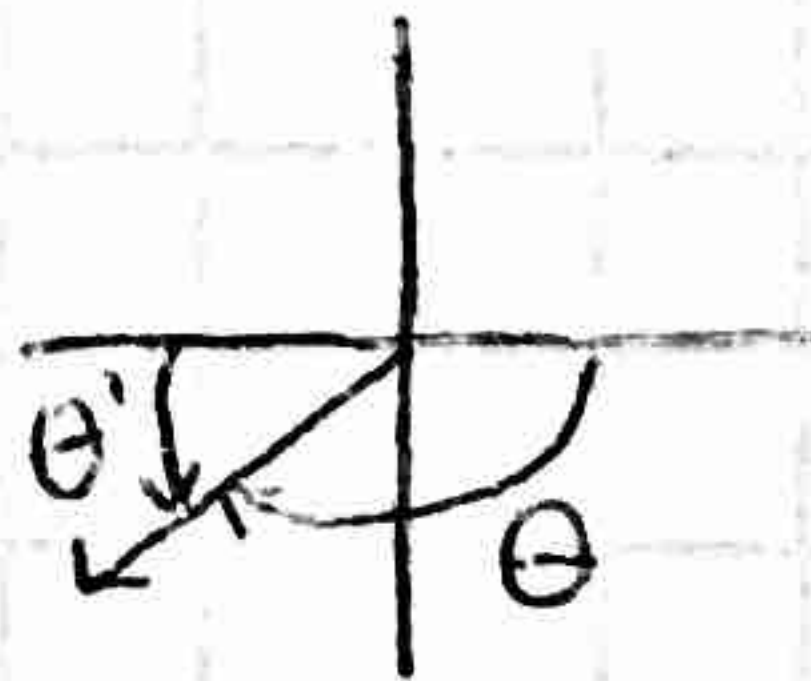


$$\begin{aligned} \sin \theta &= -\sqrt{3}/2 & \csc \theta &= -2/\sqrt{3} \\ \cos \theta &= -1/2 & \sec \theta &= -2 \\ \tan \theta &= \sqrt{3} & \cot \theta &= 1/\sqrt{3} \end{aligned}$$

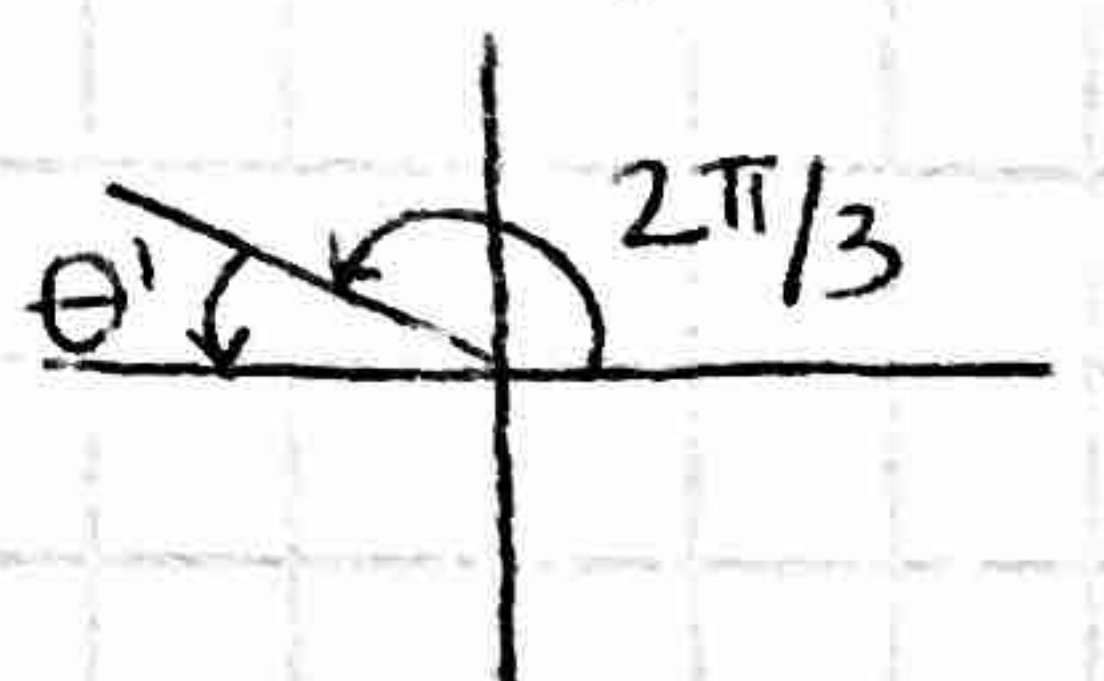
41. $\theta = 160^\circ, \theta' = 20^\circ$



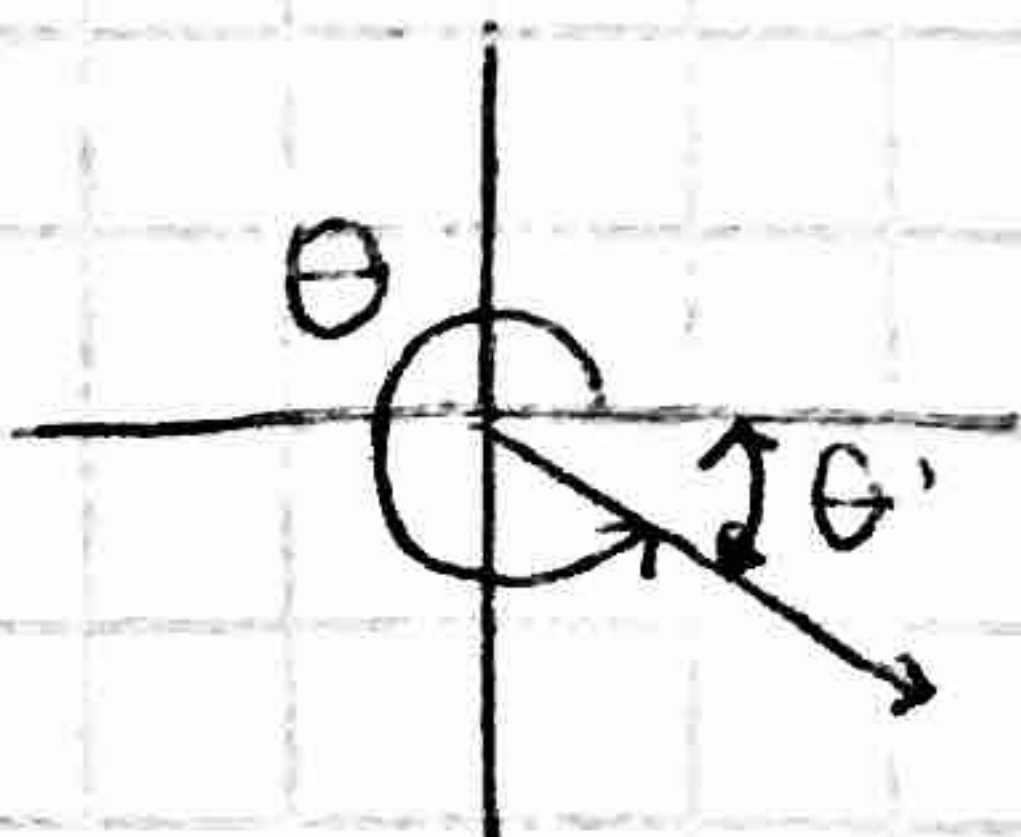
43. $\theta = -125^\circ, \theta' = 55^\circ$



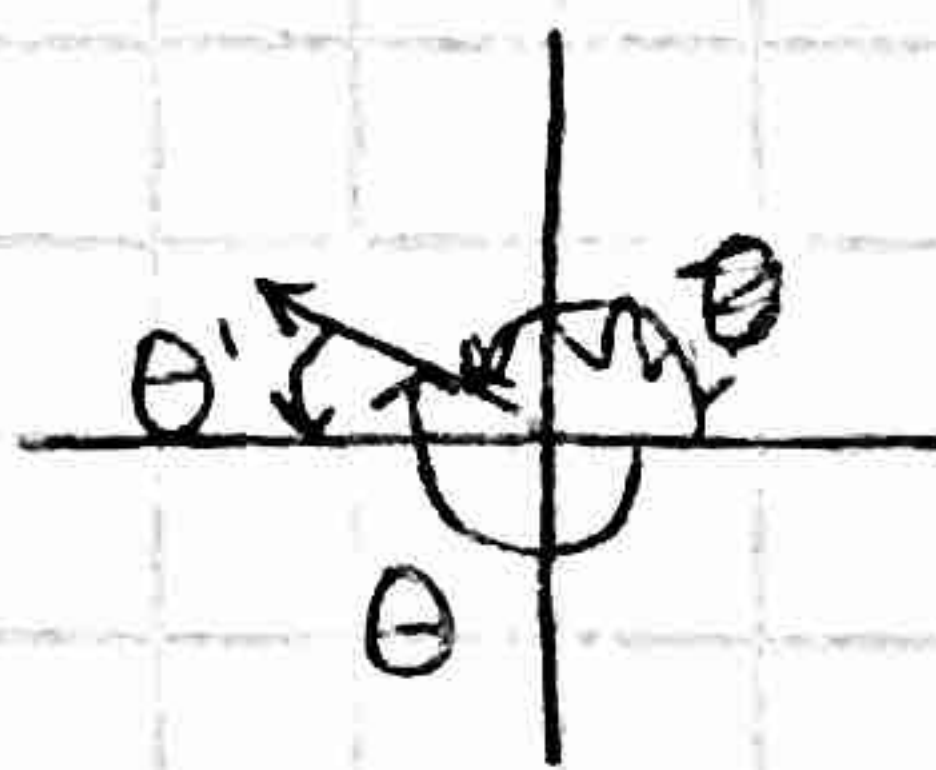
45. $\theta = 2\pi/3, \theta' = \pi/3$



42. $\theta = 309^\circ, \theta' = 51^\circ$



44. $\theta = -215^\circ, \theta' = 35^\circ$



46. $\theta = 7\pi/6, \theta' = \pi/6$

