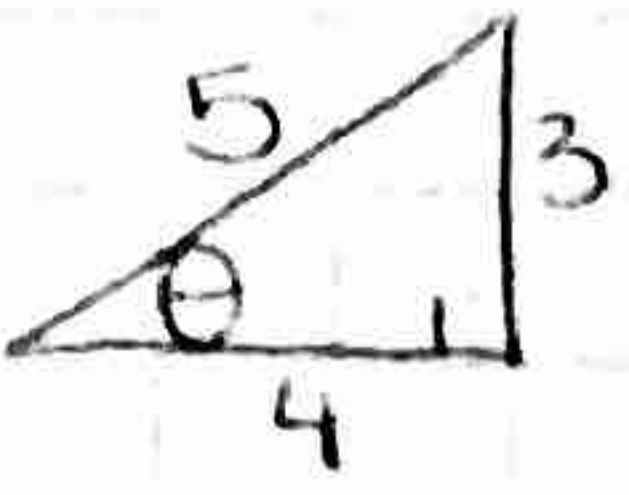
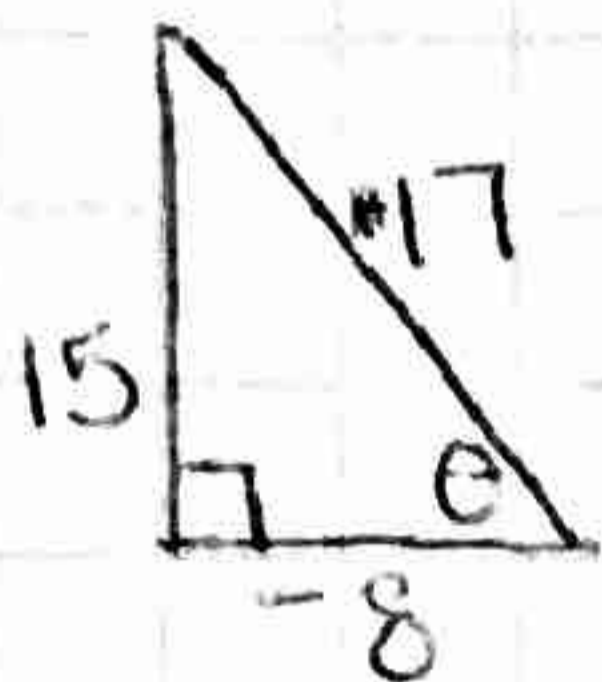
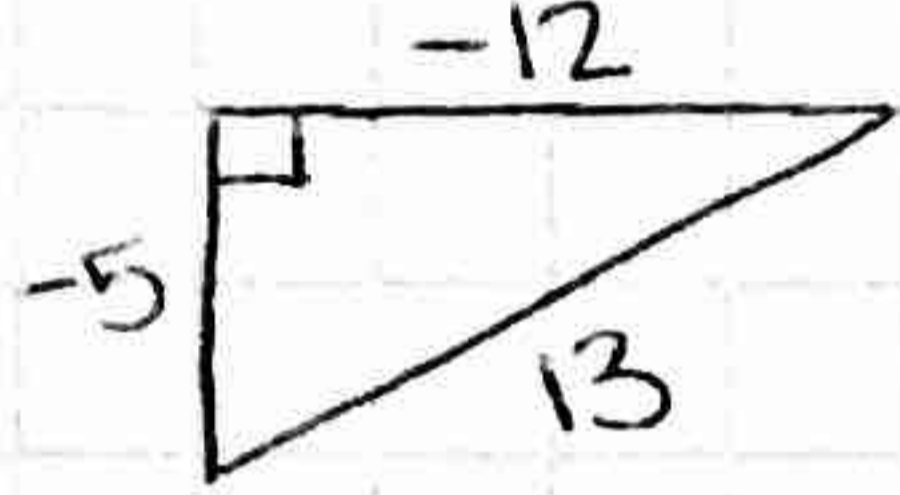


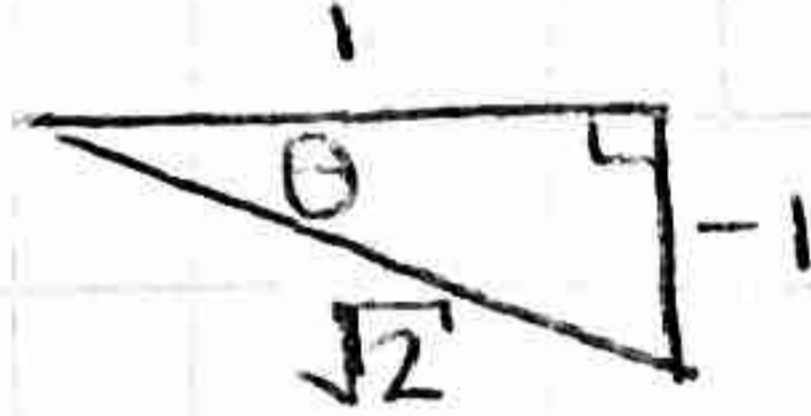
HW 80

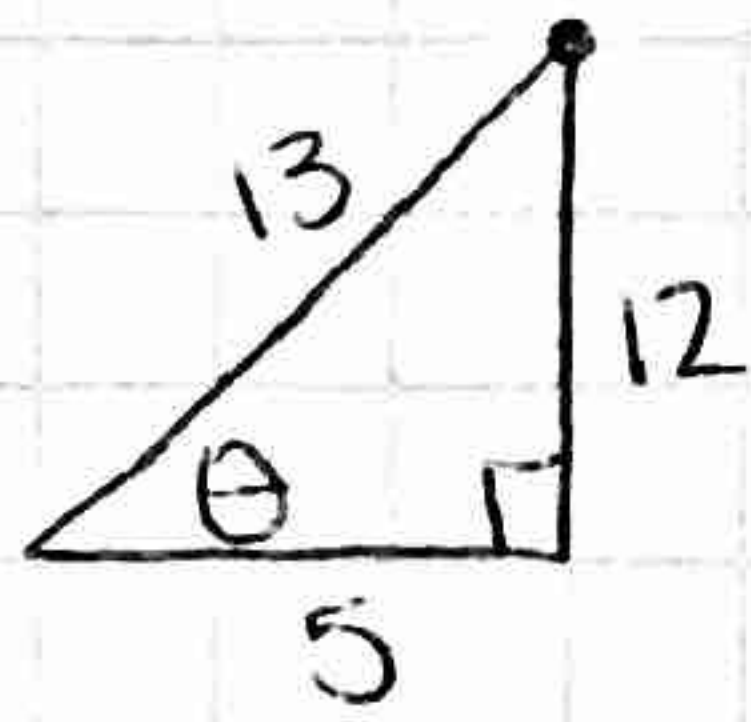
P 475

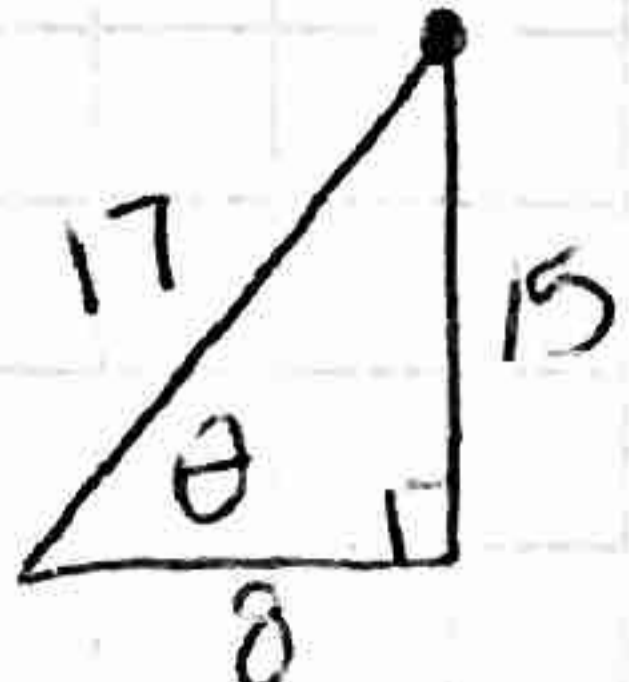
5. a)  $\sin \theta = \frac{3}{5}$ $\csc \theta = \frac{5}{3}$
 $\cos \theta = \frac{4}{5}$ $\sec \theta = \frac{5}{4}$
 $\tan \theta = \frac{3}{4}$ $\cot \theta = \frac{4}{3}$

b)  $\sin \theta = \frac{15}{17}$ $\csc \theta = \frac{17}{15}$
 $\cos \theta = -\frac{8}{17}$ $\sec \theta = -\frac{17}{8}$
 $\tan \theta = -\frac{15}{8}$ $\cot \theta = -\frac{8}{15}$

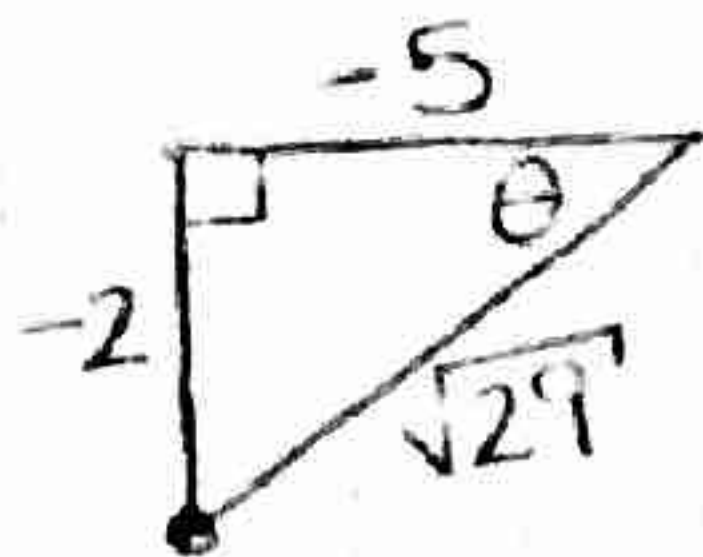
6. a)  $\sin \theta = -\frac{5}{13}$ $\csc \theta = -\frac{13}{5}$
 $\cos \theta = -\frac{12}{13}$ $\sec \theta = -\frac{13}{12}$
 $\tan \theta = \frac{5}{12}$ $\cot \theta = \frac{12}{5}$

b)  $\sin \theta = -\frac{1}{\sqrt{2}}$ $\csc \theta = -\sqrt{2}$
 $\cos \theta = \frac{1}{\sqrt{2}}$ $\sec \theta = \sqrt{2}$
 $\tan \theta = -1$ $\cot \theta = -1$

9. Q1  $\sin \theta = \frac{12}{13}$ $\csc \theta = \frac{13}{12}$
 $\cos \theta = \frac{5}{13}$ $\sec \theta = \frac{13}{5}$
 $\tan \theta = \frac{12}{5}$ $\cot \theta = \frac{5}{12}$

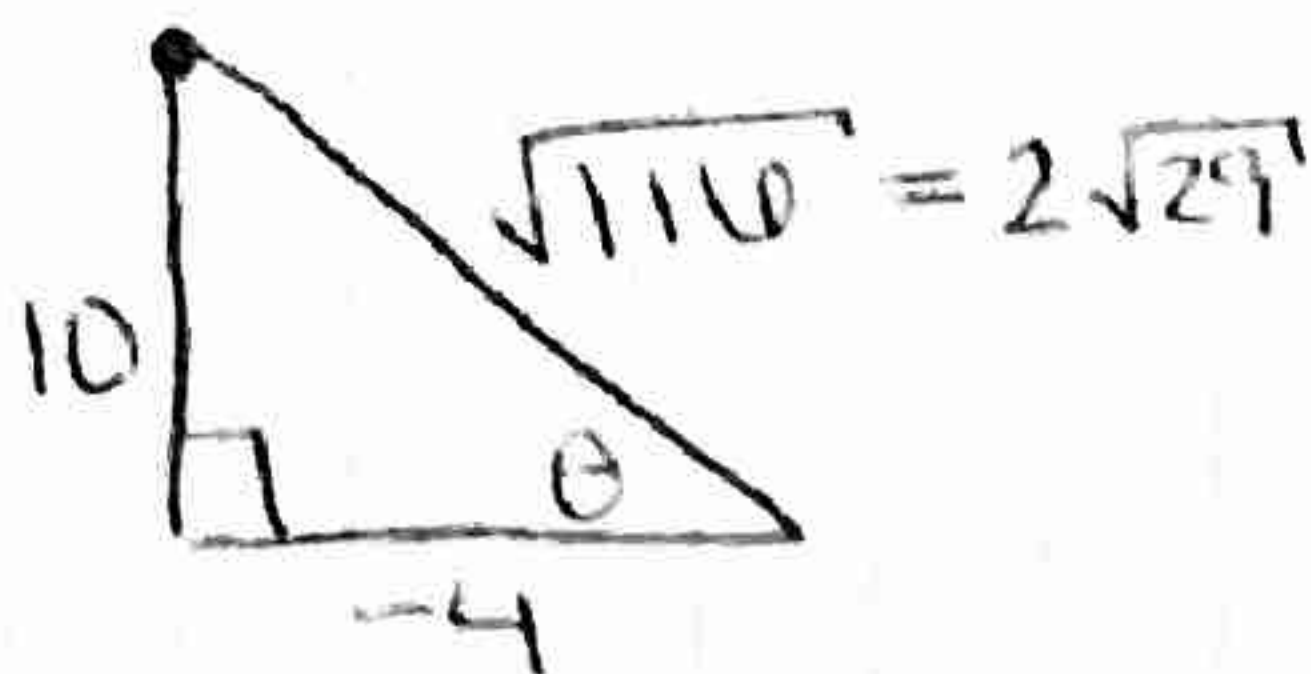
10. Q1  $\sin \theta = \frac{15}{17}$ $\csc \theta = \frac{17}{15}$
 $\cos \theta = \frac{8}{17}$ $\sec \theta = \frac{17}{8}$
 $\tan \theta = \frac{15}{8}$ $\cot \theta = \frac{8}{15}$

11. Q3



$$\begin{aligned} \sin \theta &= -2/\sqrt{29} & \csc \theta &= -\sqrt{29}/2 \\ \cos \theta &= -5/\sqrt{29} & \sec \theta &= -\sqrt{29}/5 \\ \tan \theta &= 2/5 & \cot \theta &= 5/2 \end{aligned}$$

12. Q2



$$\begin{aligned} \sin \theta &= 10/2\sqrt{29} = 5/\sqrt{29} \\ \cos \theta &= -4/2\sqrt{29} = -2/\sqrt{29} \\ \tan \theta &= 10/-4 = -5/2 \end{aligned}$$

$$\begin{aligned} \csc \theta &= \sqrt{29}/5 \\ \sec \theta &= -\sqrt{29}/2 \\ \cot \theta &= -2/5 \end{aligned}$$

15. Q1

16. Q3

17. Q2

18. sec \rightarrow cos cot \rightarrow tan Q4