

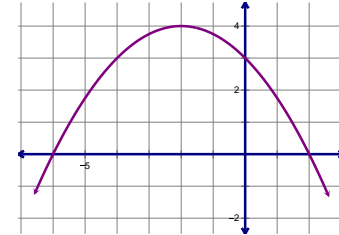
Algebra 2  
Review for Chapter 7A Quiz #1

Name: \_\_\_\_\_  
Period: \_\_\_\_\_

1. Factor  $2w^2 - w - 36$                       2. Solve  $3z^4 = 12z^2$
3. Identify the degree of the polynomial.
- a.  $x^5 - 1$       b.  $0.2x - 1.5x^2 + 3.2x^3$       c.  $250 - 16x^2 + 20x$

x	-1	0	1	2	3
y	5	-5	-7	5	37

4. Given the graph: a. write the equation in vertex form      b. write the equation in standard form  
c. write the equation in factored form      d. identify the vertex, the roots, and the line of symmetry



5. Sketch a complete graph of  $g(x) = -2x(x + 4)$

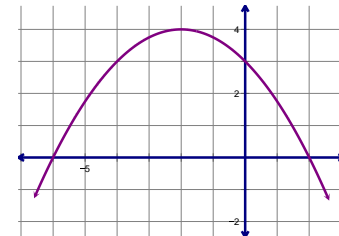
Algebra 2  
Review for Chapter 7A Quiz #1

Name: \_\_\_\_\_  
Period: \_\_\_\_\_

1. Factor  $2w^2 - w - 36$                       2. Solve  $3z^4 = 12z^2$
3. Identify the degree of the polynomial.
- a.  $x^5 - 1$       b.  $0.2x - 1.5x^2 + 3.2x^3$       c.  $250 - 16x^2 + 20x$

x	-1	0	1	2	3
y	5	-5	-7	5	37

4. Given the graph: a. write the equation in vertex form      b. write the equation in standard form  
c. write the equation in factored form      d. identify the vertex, the roots, and the line of symmetry



5. Sketch a complete graph of  $g(x) = -2x(x + 4)$

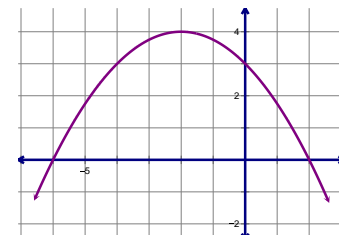
Algebra 2  
Review for Chapter 7A Quiz #1

Name: \_\_\_\_\_  
Period: \_\_\_\_\_

1. Factor  $2w^2 - w - 36$                       2. Solve  $3z^4 = 12z^2$
3. Identify the degree of the polynomial.
- a.  $x^5 - 1$       b.  $0.2x - 1.5x^2 + 3.2x^3$       c.  $250 - 16x^2 + 20x$

x	-1	0	1	2	3
y	5	-5	-7	5	37

4. Given the graph: a. write the equation in vertex form      b. write the equation in standard form  
c. write the equation in factored form      d. identify the vertex, the roots, and the line of symmetry



5. Sketch a complete graph of  $g(x) = -2x(x + 4)$