

HW 64

7. $f(1.4) = 9^{1.4} = 21.7$

8. $f(3/2) = 2.3^{3/2} = 3.5$

9. $f(-\pi) = 5^{-\pi} = 0.0006$

10. $f(3/10) = 2/3^{5(3/10)} = 0.5$

11. $f(-1.5) = 5000 \cdot 2^{-1.5} = 1767.8$

12. $f(24) = 200(1.2)^{12(24)} = 1.3 \times 10^{25}$

13. D

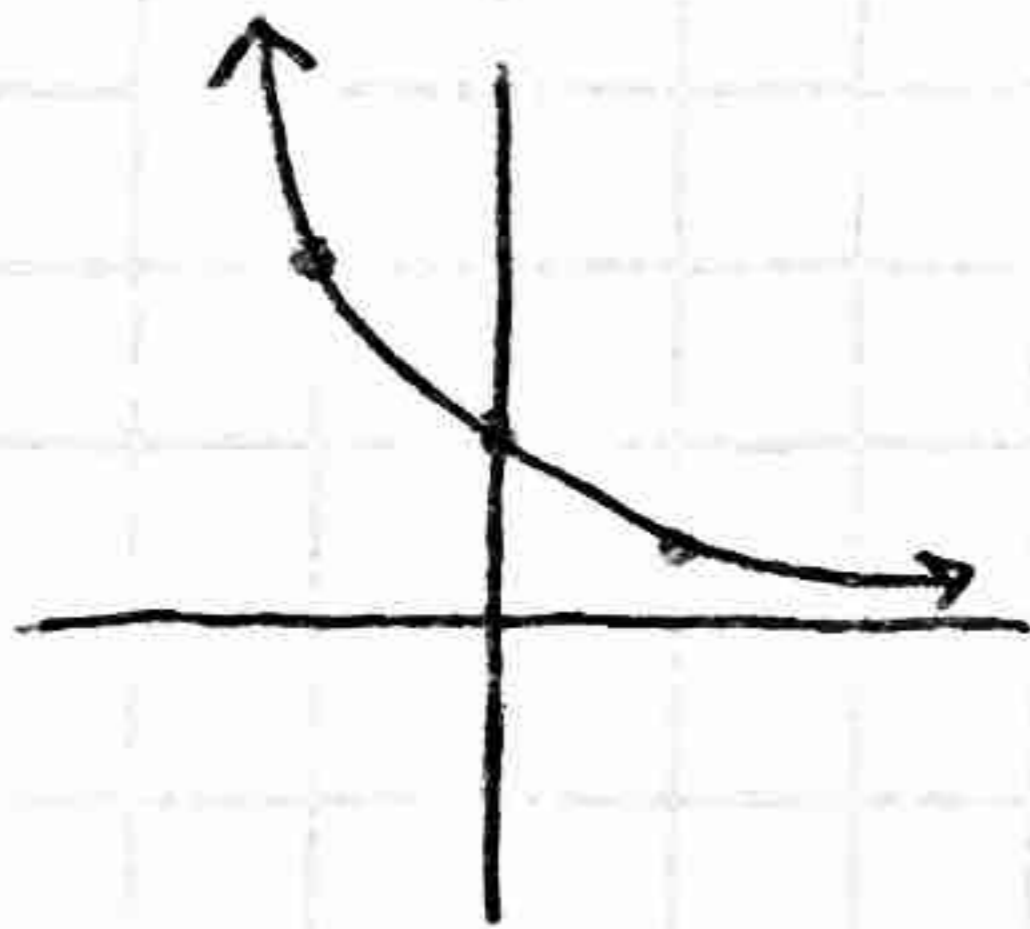
14. C

15. A

16. B

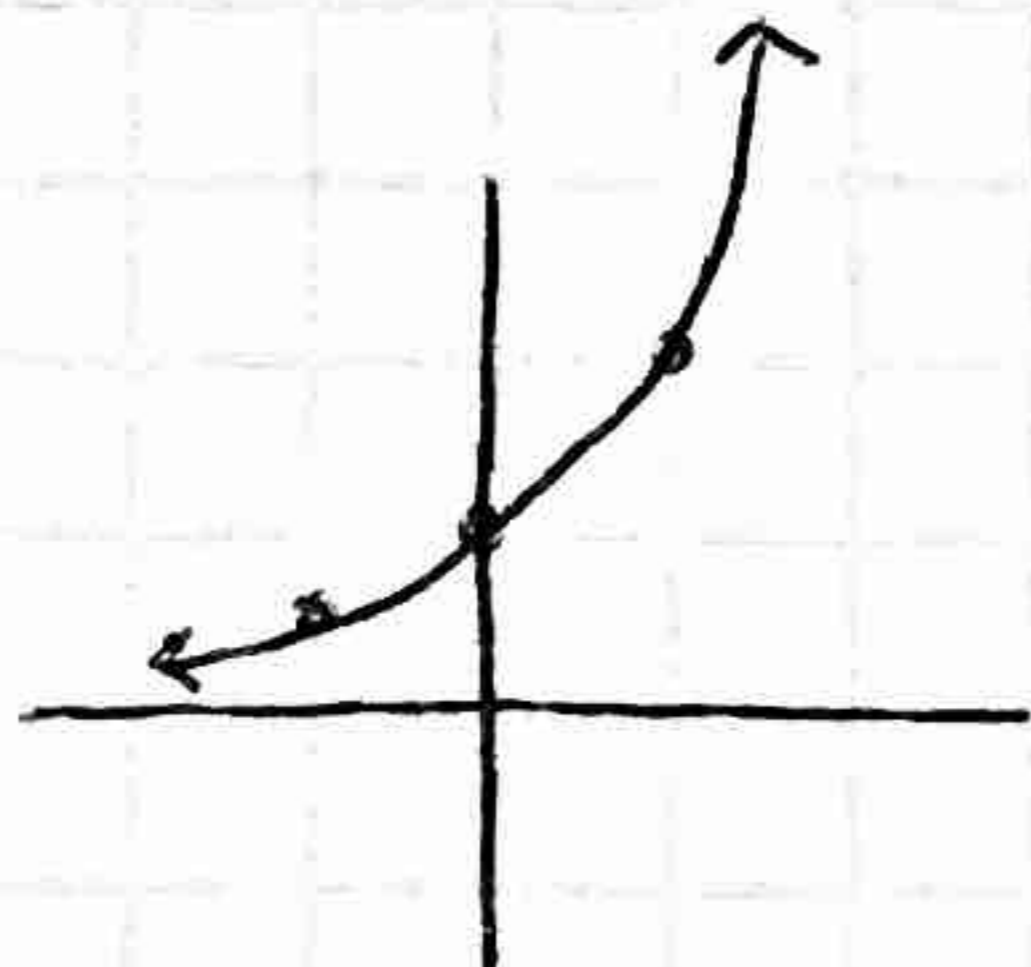
17.

X	Y
-1	2
0	1
1	1/2



18.

X	Y
-1	1/2
0	1
1	2



23. U1

24. R3

25. over x-axis, U3

26. over y-axis, R3
-(x-3)

27. over x & y axis

28. over x-axis, U5