

Discriminant Notes

A2

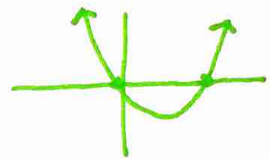
- tells how many real roots an equation has
- * equation needs to be in standard form & equal to zero.

Discriminant (D)

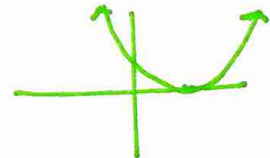
$$D = b^2 - 4ac$$

3 options

1. $b^2 - 4ac > 0$ (positive) \rightarrow 2 real roots



2. $b^2 - 4ac = 0$ (zero) \rightarrow 1 real root



3. $b^2 - 4ac < 0$ (negative) \rightarrow no real roots

