

WARM UP 11/18

A2

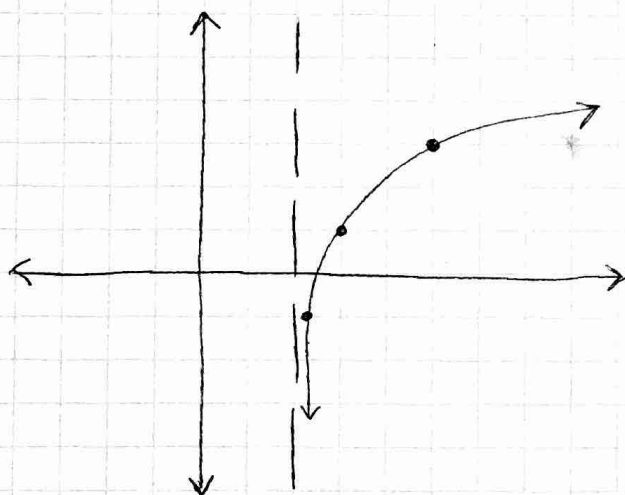
1. write the PF, key pts and transformations of

$$y = -3 \log_2 (x+1) - 4$$

then graph.

2. given the graph, find the equation:

Base 3



change of base formula

- used when you can't solve with common bases

$$\log_b a = \frac{\log a}{\log b}$$

$$\boxed{\text{ex}} \quad \log_5 27 = \frac{\log 27}{\log 5}$$

$$\boxed{\text{ex}} \quad 4^x = 17 \rightarrow \frac{\log 17}{\log 4} = x$$